



Gennovas
SYSTEMS



Infor Syteline ERP (CloudSuite Industrial) Solution for Manufacturers and Distributors

Infor CloudSuite Industrial Overview	P2
Features and Technologies	P3
Sales and Delivery	P4
Purchasing	P5
Inventory Control	P6
Production	P7
Material and Production Planning	P8
Accounting	P9

Infor CloudSuite Industrial (SyteLine) is a robust enterprise resource planning (ERP) solution specifically designed to help manufacturers improve productivity using manufacturing best practices and highly efficient process flows. With its technology you does not need to compromise to fit in, you can make it your own software.

Infor CloudSuite Industrial has been developed for more than 30 years specialized in Manufacturing and Distribution Business. It has been trusted by global company around the world and more than 400 companies in Thailand.

Key Differences

- Manufacturing specific solution
- High flexibility to modify/add-on
- Thai TAX regulation support

- Low Total Cost of Ownership
- Quick to Deploy
- 100% Microsoft Technology
- Easy to use and maintain



Trusted by Industrials

Trusted by Global/Local Manufacturers and Distributors
More than 400 customer in Thailand chose Syteline to manage and enhance their business processes.



Automotive



Aerospace & Defense



Industrial Engineering



Doors & Furnitures



High Tech



Biotech & Med Devise



Printing & Packaging



Food & Beverage

With Infor CloudSuite Industrial, you'll get a complete, scalable, enterprise-wide business management suite designed to address modern challenges. Speed, agility, and visibility that power your top and bottom line —that's what Infor CloudSuite Industrial delivers.

Specialized by industrials

Infor CloudSuite Industrial is solution specialized for manufacturing and distributor equipped with easy-to-use interface.

The solution provides features to solve issue in production and planning area, smoother your supply chain and integrated all operational data to financial and administration.

It also provide fully supported Thailand local Tax regulation.



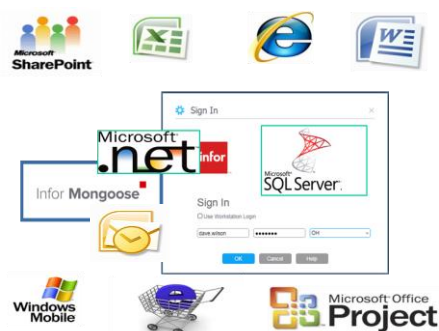
Technologies and Benefits

Built Exclusively on Microsoft

- SQL database
- Full integration with Microsoft Office
- Browser agnostic
- Low cost of ownership
- Minimum IT resources required
- Virtual servers are supported

Extremely Flexible and Scalable

Infor Mongoose Technology and Smart Framework extend and adapt SyteLine to a virtually unlimited extent with no or minimal programming and rapid application development. A rich user experience that maximizes end user productivity and extends to key customers and suppliers, and automatic web deployment too.



User's Benefits

Implementing ERP is often like driving a square peg into a round hole—you have to fit your business processes to their system, rather than the other way around.

With its Technology, Infor CloudSuite Industrial will never let your system dictate your business processes. **Instead, define your own processes and make the system your own.**

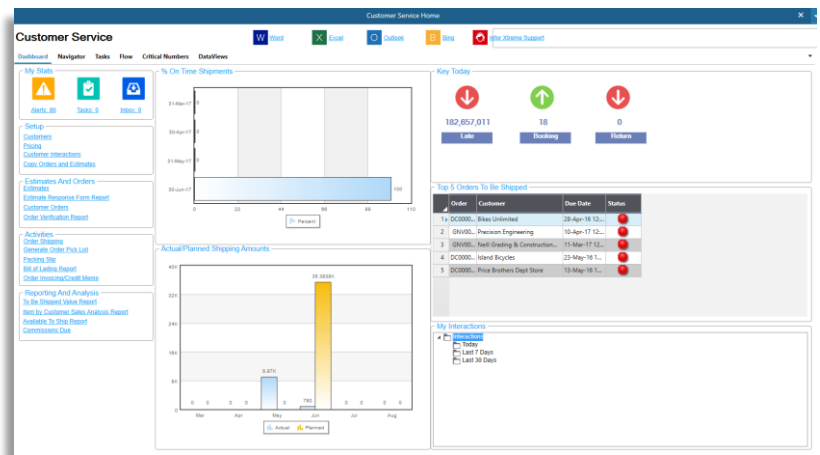
Infor CloudSuite Industrial Customer Order Entry and Invoicing features allow you to access complete sales order information instantly, while providing your customer service representatives with online support to enter and track customer orders and create invoices. CloudSuite Industrial is fully integrated from the point of customer quotes through customer order entry, engineering, production, costing, shipping, and customer service.

Overview

This integration allows operator to take act on credit problems, reschedule requirements, and release orders in a timely manner to meet required shipment dates.

It also provides access to crucial data including general customer information and credit status, order backlog, material and resource availability, order acknowledgments, percentage of completion, and shipping information.

Comprehensive sales analysis reports help decision makers track everything from customers to sales representatives.



Customer Service Home – Oversee all sales activities

Key features

Order Entry

- Centralized and decentralized order entry
- Automatic credit checking, warnings and hold
- Order change history
- Volume, customer/item, contract and matrix pricing
- Regular/Blanket Orders
- Link customer order lines directly to Job Orders, Inventory, Purchase Orders and Transfer Orders

Invoicing

- POS
- Quick Invoicing
- Progressive billings
- Consolidated invoicing
- Tier Customers (Corp – Bill To, Sold To(s), Ship To(s))
- Available to promise for real delivery dates

Delivery

- Consolidate multiple Delivery Orders onto one invoice
- Invoice for a specific Delivery Order
- Create Delivery Orders before, during, or after Shipping
- Track multiple shipments with one Tracking number
- Export Documents
- Hard and soft allocations/reservation

Return Material Authorizations (RMAs)

- Without returning material
- Return to Stock

Infor CloudSuite Industrial allows you to easily coordinate material purchases by providing online decision support that simplifies record keeping. Purchasing supports your company in managing its expenditures and reimbursing vendors promptly for services or goods provided. It helps you maintain control of inventory to enhance your company's cash flow and shorten delivery times.

Overview

CloudSuite Industrial handles all types of purchases, including inventoried items, supply items, outside service operations pertaining to a manufacturing order, and subcontracted items that require components being sent to the vendor.

Drop shipments can include specific locations other than the primary ship-to address, such as various warehouses or customer locations.

Requisitions

Requisition	PO Number	Vendor	Cost	Status	Requisition Date
1	DR00000002	DP00000100	8	8,200.00 Converted	11-Nov-14

Purchase Orders

PO Number	Vendor	Status	Order Date	Cost	Contact	Type	Currency
1	DP00000100	8 Complete	02-Mar-15	8,200.00	Mike Wilson	Regular	USD

Receipts

PO Number	Vendor	Received Date	Qty Received	Qty Returned
1	DP00000100	8 03-Mar-15	20,000.00	0.00
2	DP00000100	8 03-Mar-15	6.00	0.00

Vouchers

Voucher	PO Number	Vendor	Cost	Invoice Amt	Invoice Date	Dist Date	Currency
1	220	DP00000100	8	8,200.00	8,200.00 10-Mar-15	10-Mar-15	USD
2	220	DP00000100	8	8,200.00	8,200.00 10-Mar-15	10-Mar-15	USD

Payments

Voucher	PO Number	Vendor	Payment Date	Paid Amount	Check Number	Currency
1	220	DP00000100	8 29-Jul-15	8,200.00	1063	USD
2	220	DP00000100	8 29-Jul-15	8,200.00	1063	USD

Purchase Order Document Lifecycle

Key features

Request for Quote

Using RFQ, a user can shop the purchase request to all or a predefined set of vendors. RFQ contains the complete flow from the creation of the RFQ Header to the selection of the winning Vendor. It helps streamline the entire purchasing process, making it more efficient and effective, helping managers make decisions to optimize use of resources.

Purchase Order Requisitions

- Support for both Inventory and Non-Inventoried Items
- Create from Customer Order Lines, Customer Order Blanket Releases, Estimated Materials, Estimate Project Resources, Job Materials, Project Resources, and Transfer Order Lines automatically
- Set Approval Levels by PO Requisition Limit and PO Requisition Line Limit
- Convert approved PO Requisitions to Purchase Orders automatically

Purchase Order Processing

- Multiple delivery schedules and shipping addresses
- Purchase Price based on order date or delivery date
- Vendor Return
- Purchase Order Change Logs.
- Visibility into the lifecycle of a purchase order PO Tolerance for Inventory and Non-Inventory Items

Goods Receiving Notes (GRN)

Infor CloudSuite Industrial Goods Receiving Notes allows you to link a receipt to multiple purchase orders for the same vendor. The GRN lists which items and quantities have been received and when. This GRN can be sent to the Accounts Payable department and can be used in the matching process.

Infor CloudSuite Industrial gives you more control over your inventory by providing greater accuracy and immediate access to inventory information throughout the company.

It automates the process of tracking parts by adjusting inventory whenever you create a transaction involving a part. Updates and maintains raw materials, WIP and finished goods inventory quantities and costs.

Key Features

- Lot & Serials
- Life cycle Expiry date
- Multiple Factory/WH
- Stock take
- User defined unit of measure conversion
- Stock Card
- Inventory aging reporting
- Container, Dimensional, and Consignment Inventory
- Cost methods (Standard, actual, LIFO, FIFO and Lot Specific)
- Safety Stock, Reorder Points, Order min/multiple/max



Inventory Management Features

Physical Inventory

Infor CloudSuite Industrial Physical Inventory is the process of manually counting all inventory for a specific warehouse or location. Upon completion of the actual physical inventory, all numbers are then recorded, and discrepancies are identified and explained.

Infor CloudSuite Industrial Physical Inventory allows you to obtain accurate information about quantities on hand, which will help you make more informed business decisions.

Transfer Order

Infor CloudSuite Industrial Transfer Orders give you visibility into in-transit inventory across the system, including Transfer Order number, item, quantity in-transit, quantity to be shipped, shipment mode, freight cost, and more.

Cycle Count

Infor CloudSuite Industrial Cycle Counting allows you to perform an inventory count on small subsets of your total inventory on any given day. Cycle counts are similar to a total physical inventory in that it allows you to track your on-hand inventory but do not require a warehouse inventory freeze.

Therefore, Cycle counts do not disrupt your daily operations, provide continuous measures for inventory accuracy, and can be triggered to focus on the items with high value, high volume, and that are critical to on-time delivery.

Infor Syteline ERP is specialized for the verticals in Industrial and it is best-of-breed components. Production Management Module provides different methods for customer to adapt the most suited way to manage their production business operation

Key Feature Overview

Work Order

Infor CloudSuite Industrial allows you to use jobs, also referred to as manufacturing work orders, to track specific manufacturing processes, including labor, material, machines, costs, scrap, work in process, and finished goods inventory.

CloudSuite Industrial provides several methods of creating and defining a job; you can use whichever method you prefer.

- Create jobs based on plan from MRP/APS process
- Link customer orders directly to jobs
- Schedule jobs based on finite and infinite forward scheduling
- Create jobs for By-products, Co-Products or Rework
- Issue materials to a work order or back flush materials automatically based on operation or job completions
- Transactions can be entered manually or posted automatically with bar code data collection or back flushing.
- Track all actual (or standard) labor and material, as well as WIP (work-in-process) costs, through a detailed routing.
- Review estimated versus actual costs by job
- Drive costs by Work Center & Department
- Allows for Overlapping Operations
- Outside Process Management

Co-Product and by product

Many production processes result in more than one stock keeping unit (SKU). These additional materials may be Co-products or By-products and Infor CloudSuite Industrial models both.

Repetitive manufacturing

Schedules are typically used when you manufacture the same item regularly — standard products — and do not need precise tracking of actual labor and material costs for every job.

Costs are charged to the items produced in the work center based on the standard bill of material and routing

Production Schedules do not require actual labor and material tracking. Instead, after a Production Schedule is created you need only report the item produced and the quantity and the labor and material are back flushed.

Batch Production

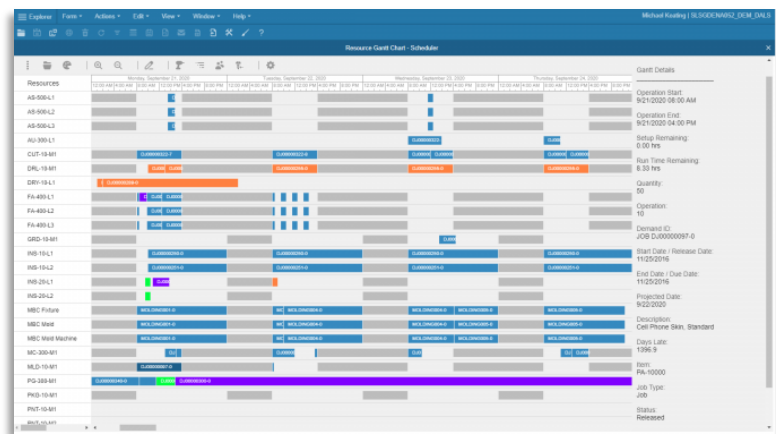
you can group several potentially different items on different jobs into a batch and process that batch through, for example, an oven or a paint booth. After the batch is processed, the different jobs then continue their own routing. Batching affects only the Scheduler, not the Planner.

Each batch definition describes how batches are formed, including a routing that processes the batched parts. The operations form include a batch definition field. Any operation on which a batch definition is specified is referred to as the batch operation.

The feature considers finite capacity as well as material, people, machines and tools availability. And continually monitor demand as it occurs. By combining production plan with production scheduling, you will be able to boost productivity, improve order accuracy, increase on-time delivery and keep your customer happy

Key Features

- Master Production Scheduling
- MRP or Infinite Advance Planning
- Resource Bottleneck analysis
- Advance Planning & Scheduling (APS)
- What-if Planning scenarios
- Graphical capacity and scheduling charts
- Planning and forecasting by Warehouse
- Scheduler Batching groups several different item from different Job into a batch for processing
- Prioritize demands by customer, by customer order, and by customer order lines, in additional to prioritizing by type



Resource Gantt Chart

Advance Planning & Scheduling

Advanced Planning & Scheduling (APS)

With CloudSuite Industrial APS, you can rely on a solution that is built, serviced, and managed by manufacturing professionals who understand your specific requirements—Our solution helps you meet your goal by providing seamless advanced planning capabilities, increasing your on-time performance and throughput while reducing inventory and operating costs.

Greater Visibility in Planning

Our solution provides exceptional visibility into the lean manufacturing plans it creates. You get a continuously visible plan for each order, so that every order “knows” the jobs and POs it needs, and every supply “knows” the demand it supports.

“What-if” capabilities

The “what-if” capabilities of the CloudSuite Industrial APS engine let users determine the impact of decisions. For example, you can insert a high priority order into your current production plan, add overtime hours, or outsource specific components.

Simultaneous materials and resource scheduling

Our solution concurrently plans all materials and capacity needed to satisfy the customer order. It balances available capacity with the actual projected workload without assuming that capacity is unlimited or “infinite.”

Freeze Schedule

At the time of order entry, our solution provides the ability to obtain a promise date for the order which considers the finite constraints of both material and capacity.

Infor CloudSuite Industrial General Ledger tracks financial expenditures within the company and generates financial statements and reports for management, auditors, and investors. Financial information collected during day-to-day operations is posted frequently to distribution journals.

Key Features

- Account Receivables
- Account payables
- Fixed Assets
- General Ledger
- Thai Local Regulations
- Multiple Site Consolidation
- Multiple Currency
- Microsoft Office Integration
- Auto-Posting
- IFRS Certified



Thailand Localization

Country packs that are additional forms and functions that are contained in a country pack for Thailand. These are unique requirements only required for the specific country for which they are built.

Account Payables/Account Receivables

- Multiple Vendor Invoice
- Tax Invoice, Tax Receipt
- Billing (AR and AP)
- EDI for Payments
- Sales and Purchase Vouchers

Reports

- Stock Card
- Other Reports

Fixed Assets

- Fixed Asset Simulation
- Depreciation Calculation
- Budgeting

TAX Related

- Withholding Tax
- VAT and Suspended VAT
- Output VAT/Input VAT

